



 Create Mail ▾
  Send/Recv ▾
  Addresses
  Find ▾
  Norton AntiSpam ▾

Folders [X]

- Outlook Express
 - Local Folders
 - Inbox (1)**
 - Outbox
 - Sent Items
 - Deleted Items
 - Drafts
 - Norton AntiSpam Folder

Contacts ▾ [X]

There are no contacts to display. Click on Contacts to create a new contact.

[Go to msn](#)

Outlook Express

for Jon Doe

[Find a Message...](#)
Identities ▾

E-mail

 There is **1 unread Mail message** in your Inbox

[Set up a Mail account...](#)

Tip of the day [X]

Need to find someone's e-mail address?

Click the **Edit** menu, click **Find**, then click **People**.

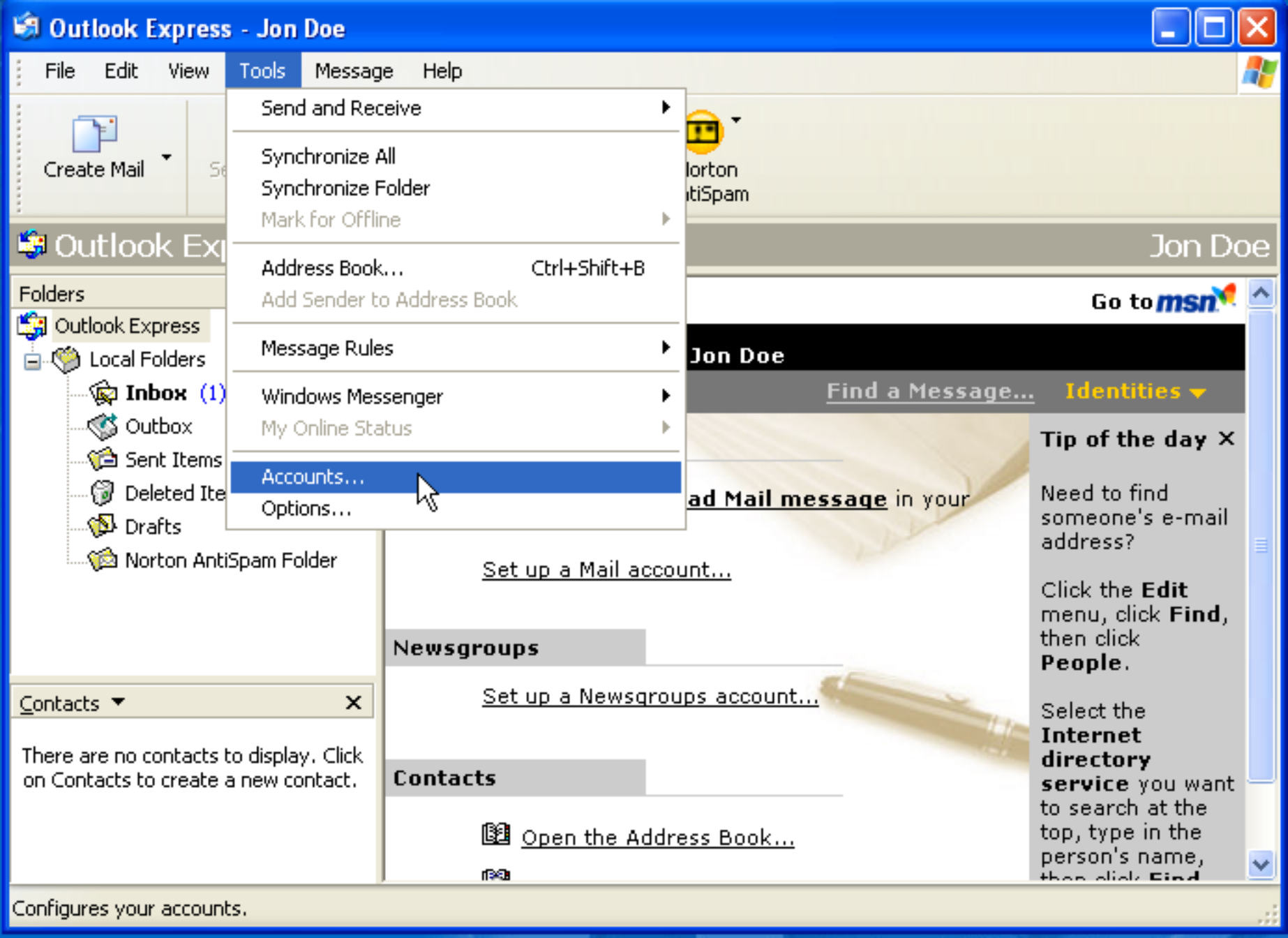
Select the **Internet directory service** you want to search at the top, type in the person's name, then click **Find**.

Newsgroups

[Set up a Newsgroups account...](#)

Contacts

 [Open the Address Book...](#)



Create Mail

Outlook Express

Folders

- Outlook Express
- Local Folders
 - Inbox (1)
 - Outbox
 - Sent Items
 - Deleted Items
 - Drafts
 - Norton AntiSpam Folder

Contacts

There are no contacts to display. Click on Contacts to create a new contact.

- Send and Receive
- Synchronize All
- Synchronize Folder
- Mark for Offline
- Address Book... Ctrl+Shift+B
- Add Sender to Address Book
- Message Rules
- Windows Messenger
- My Online Status
- Accounts...
- Options...

Norton AntiSpam

Jon Doe

Go to msn

Jon Doe

Find a Message... Identities

ad Mail message in your

Tip of the day

Need to find someone's e-mail address?

Click the **Edit** menu, click **Find**, then click **People**.

Select the **Internet directory service** you want to search at the top, type in the person's name, then click **Find**.

Set up a Mail account...

Newsgroups

Set up a Newsgroups account...

Contacts

Open the Address Book...

Internet Accounts

All Mail News Directory Service

Account	Type	Connection
Active Directory	directory service	Local Area Network
Bigfoot Internet ...	directory service	Local Area Network
VeriSign Internet ...	directory service	Local Area Network
WhoWhere Inter...	directory service	Local Area Network

Add

Remove

Properties

Set as Default

Import...

Export...

Set Order...

Close

Mail...

News...

Directory Service...

There are no contacts to display. Click on Contacts to create a new contact.

Contacts

 [Open the Address Book...](#)



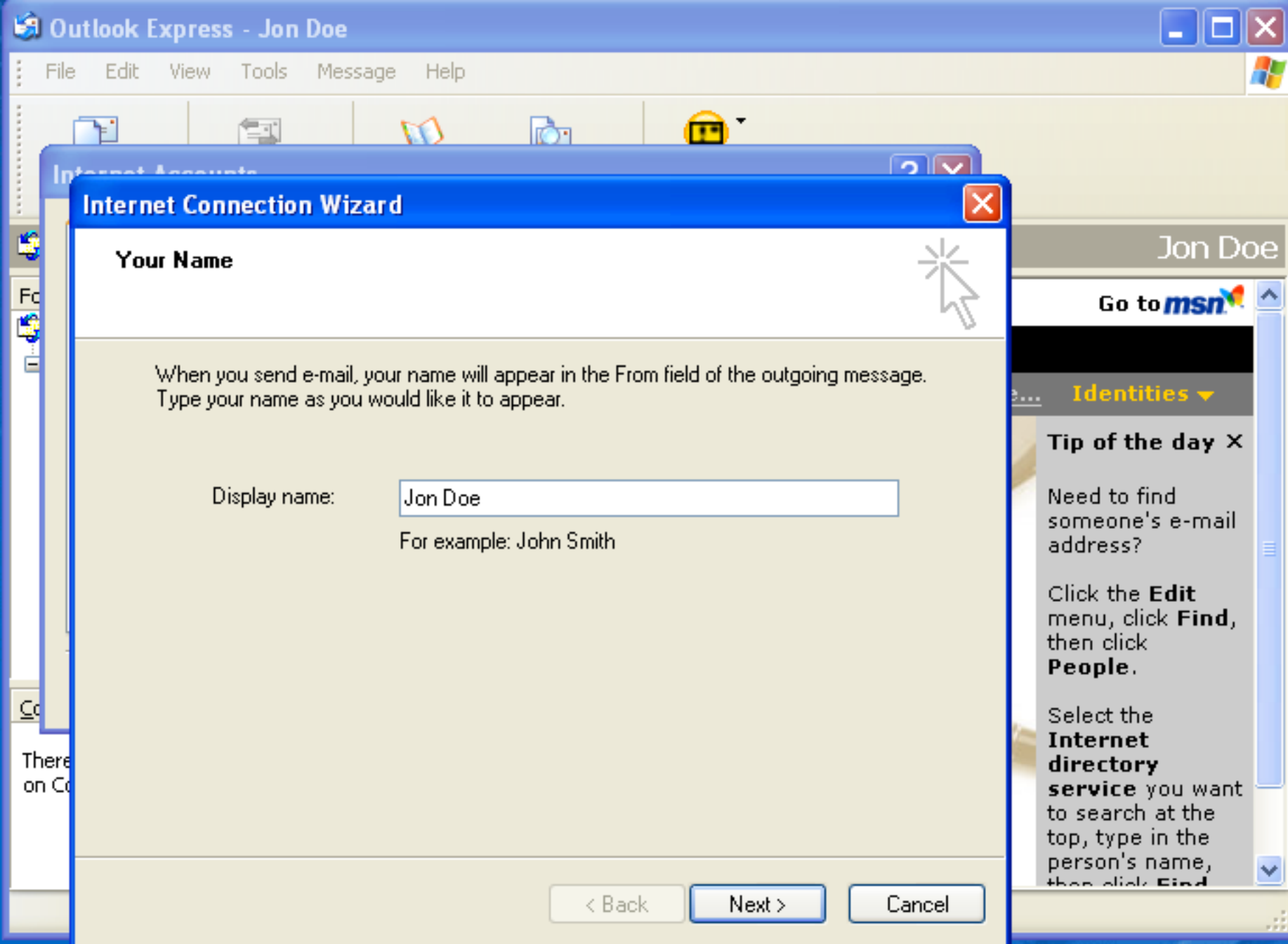
Identities

Tip of the day

Need to find someone's e-mail address?

Click the **Edit** menu, click **Find**, then click **People**.

Select the **Internet directory service** you want to search at the top, type in the person's name, then click **Find**.



Internet Connection Wizard

Your Name

When you send e-mail, your name will appear in the From field of the outgoing message. Type your name as you would like it to appear.

Display name:

For example: John Smith

< Back

Next >

Cancel

Jon Doe

Go to **msn**

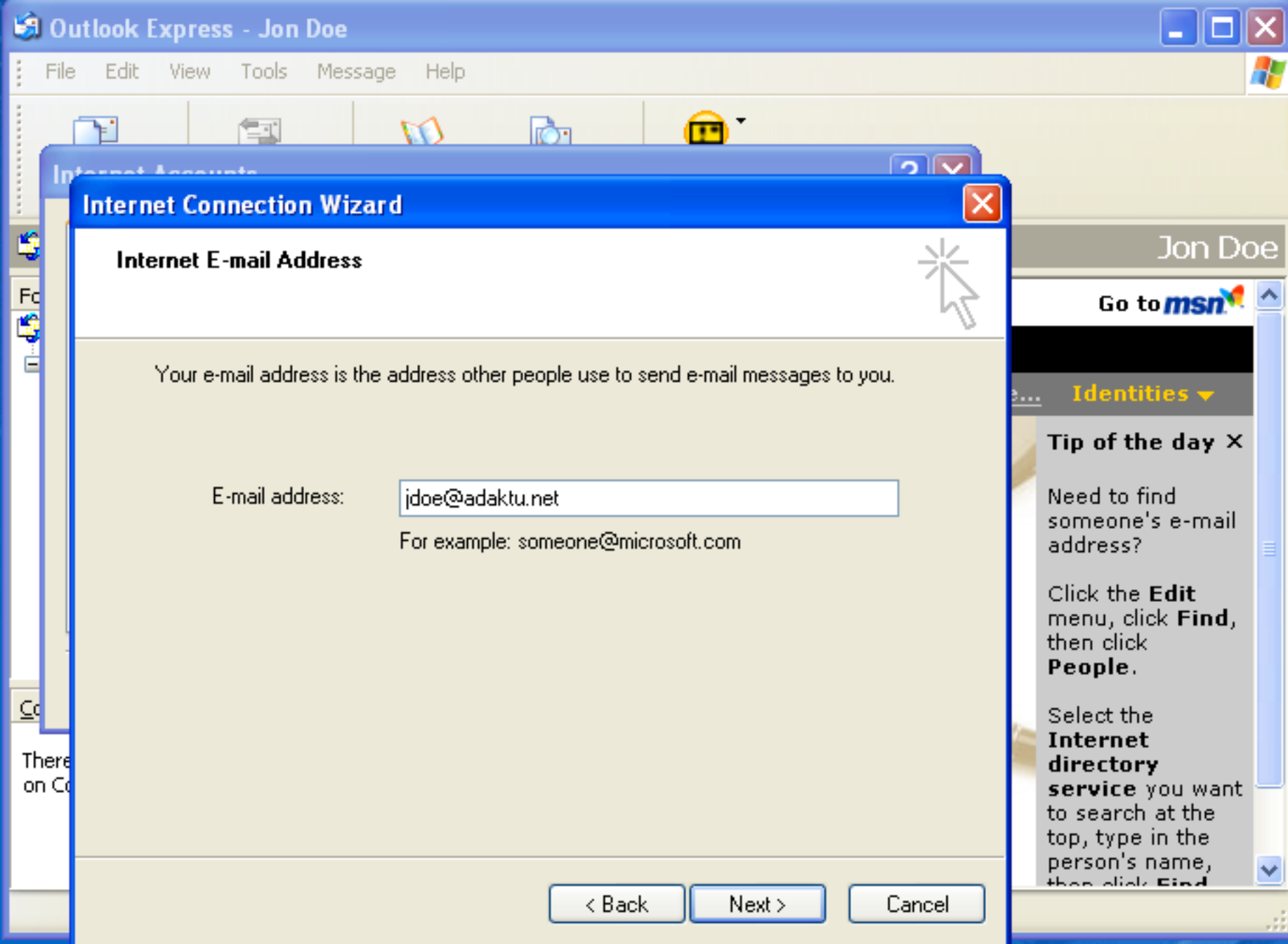
Identities

Tip of the day

Need to find someone's e-mail address?

Click the **Edit** menu, click **Find**, then click **People**.

Select the **Internet directory service** you want to search at the top, type in the person's name, then click **Find**.



Internet Connection Wizard

Internet E-mail Address

Your e-mail address is the address other people use to send e-mail messages to you.

E-mail address:

For example: someone@microsoft.com

< Back

Next >

Cancel

Jon Doe

Go to **msn**

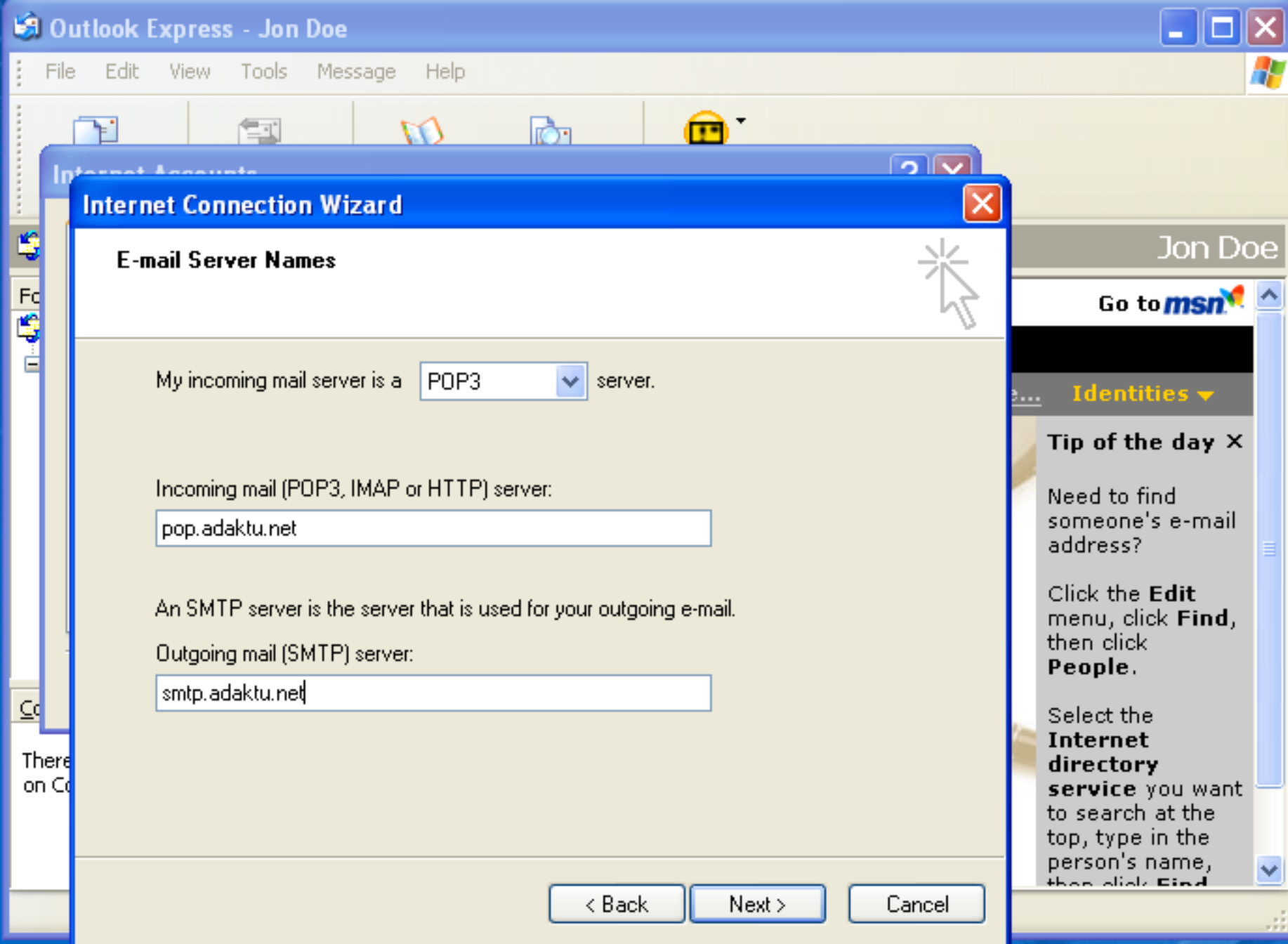
Identities

Tip of the day

Need to find someone's e-mail address?

Click the **Edit** menu, click **Find**, then click **People**.

Select the **Internet directory service** you want to search at the top, type in the person's name, then click **Find**.



Internet Connection Wizard

E-mail Server Names

My incoming mail server is a server.

Incoming mail (POP3, IMAP or HTTP) server:

An SMTP server is the server that is used for your outgoing e-mail.

Outgoing mail (SMTP) server:

< Back

Next >

Cancel

Jon Doe

Go to **msn**

Identities

Tip of the day

Need to find someone's e-mail address?

Click the **Edit** menu, click **Find**, then click **People**.

Select the **Internet directory service** you want to search at the top, type in the person's name, then click **Find**.

Internet Connection Wizard

Internet Mail Logon

Type the account name and password your Internet service provider has given you.

Account name:

Password:

Remember password

If your Internet service provider requires you to use Secure Password Authentication (SPA) to access your mail account, select the 'Log On Using Secure Password Authentication (SPA)' check box.

Log on using Secure Password Authentication (SPA)

< Back

Next >

Cancel

Jon Doe

Go to **msn**

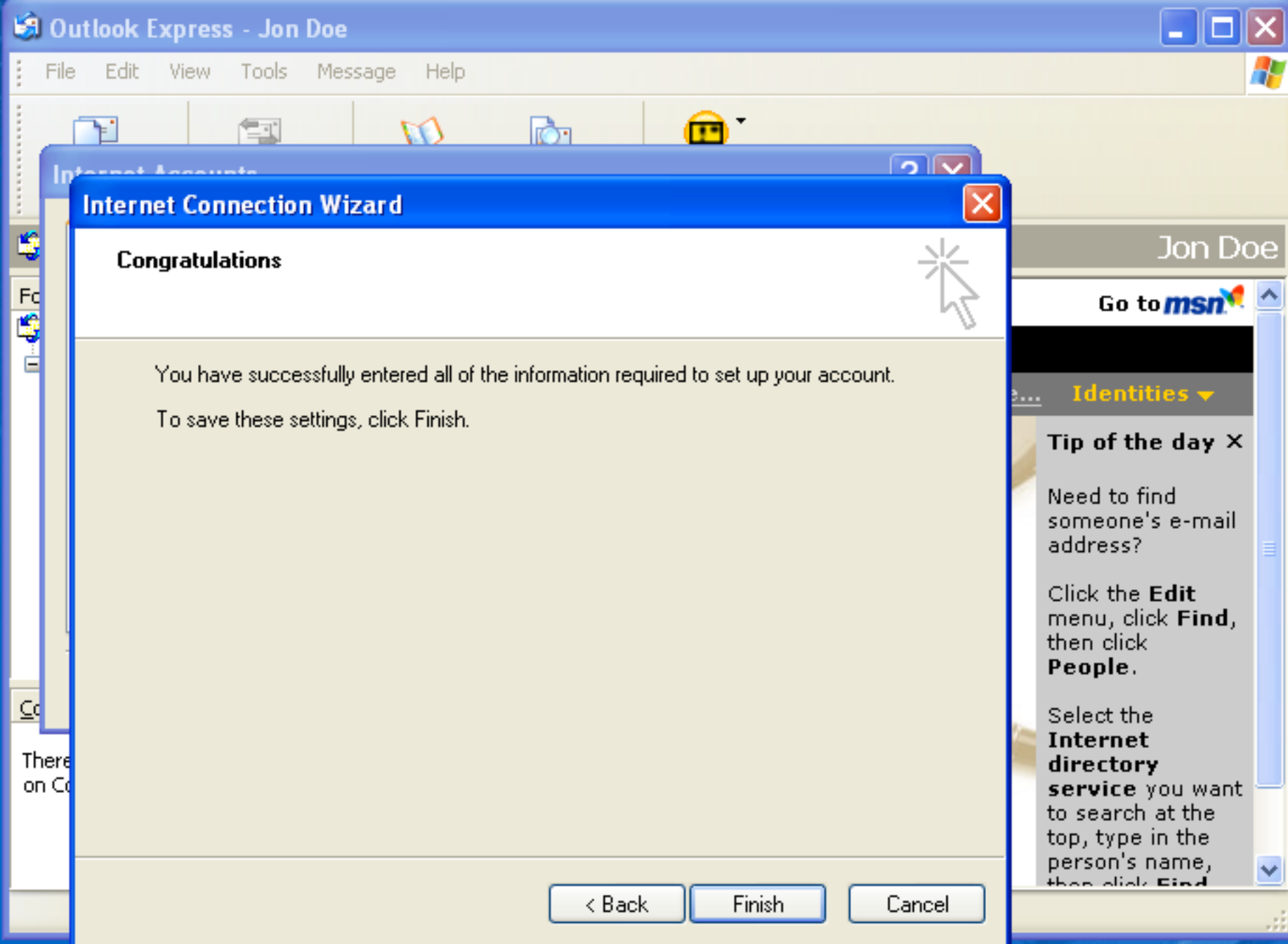
Identities

Tip of the day X

Need to find someone's e-mail address?

Click the **Edit** menu, click **Find**, then click **People**.

Select the **Internet directory service** you want to search at the top, type in the person's name, then click **Find**.



Internet Connection Wizard

Congratulations

You have successfully entered all of the information required to set up your account.
To save these settings, click Finish.

< Back

Finish

Cancel

Jon Doe

Go to **msn**

Identities

Tip of the day

Need to find someone's e-mail address?

Click the **Edit** menu, click **Find**, then click **People**.

Select the **Internet directory service** you want to search at the top, type in the person's name, then click **Find**.

Internet Accounts

All Mail News Directory Service

Add ▶

Account	Type	Connection
Active Directory	directory service	Local Area Network
Bigfoot Internet ...	directory service	Local Area Network
pop.adaktu.net	mail (default)	Any Available
VeriSign Internet ...	directory service	Local Area Network
WhoWhere Inter...	directory service	Local Area Network

Remove

Properties

Set as Default

Import...

Export...

Set Order...

Close

Jon Doe

Go to **msn**

page... Identities ▼

Tip of the day ✕

Need to find someone's e-mail address?

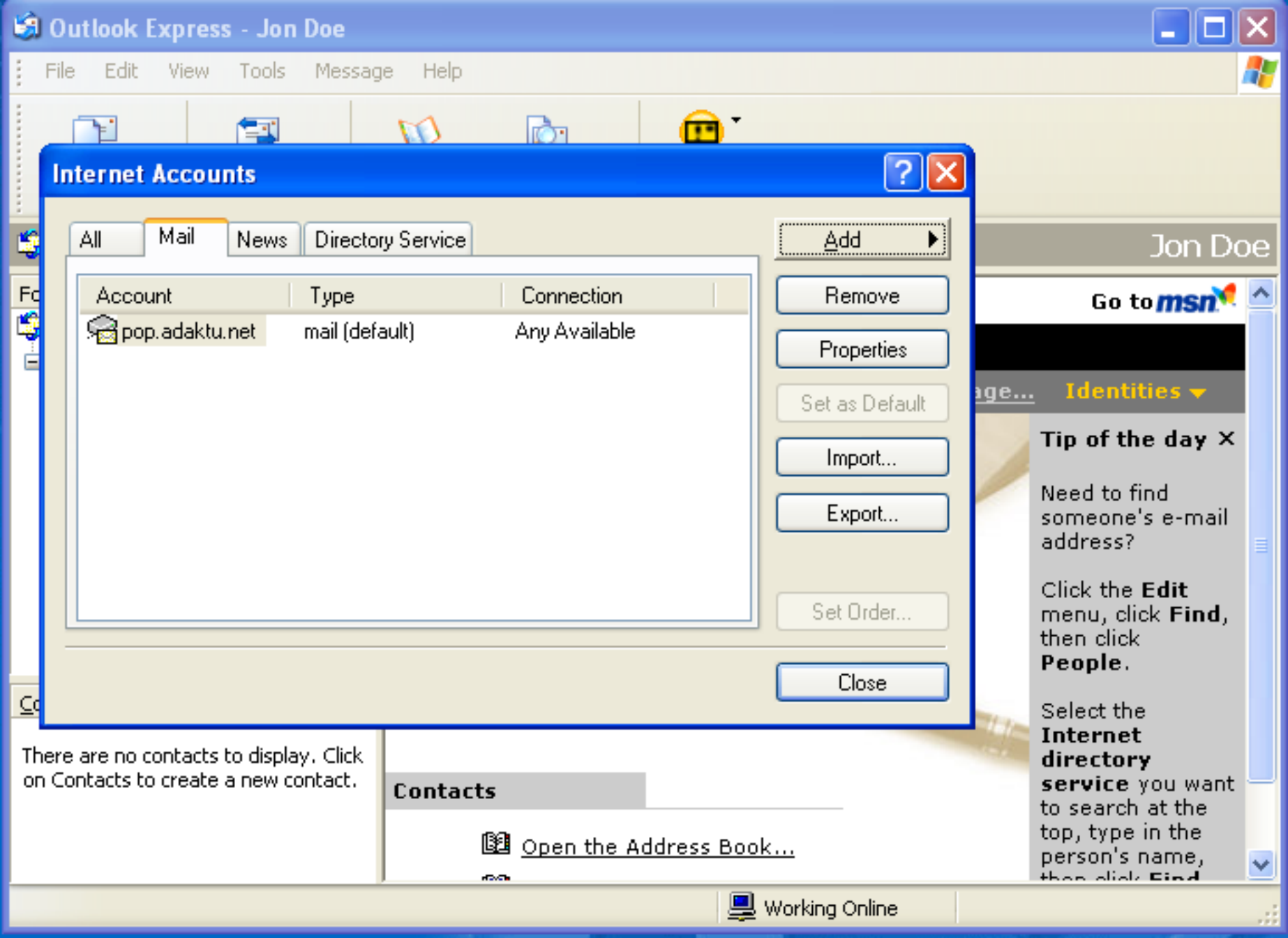
Click the **Edit** menu, click **Find**, then click **People**.

Select the **Internet directory service** you want to search at the top, type in the person's name, then click **Find**

There are no contacts to display. Click on Contacts to create a new contact.

Contacts


 [Open the Address Book...](#)



Internet Accounts

All Mail News Directory Service

Add

Account	Type	Connection
 pop.adaktu.net	mail (default)	Any Available

Remove

Properties

Set as Default

Import...

Export...

Set Order...

Close

Jon Doe

Go to **msn**

page... **Identities**

Tip of the day X

Need to find someone's e-mail address?

Click the **Edit** menu, click **Find**, then click **People**.

Select the **Internet directory service** you want to search at the top, type in the person's name, then click **Find**

Contacts

 [Open the Address Book...](#)

 Working Online